

## \$660,000 - 17028 78 Street, Edmonton

MLS® #E4457048

**\$660,000**

5 Bedroom, 3.50 Bathroom, 2,700 sqft

Single Family on 0.00 Acres

Schonsee, Edmonton, AB

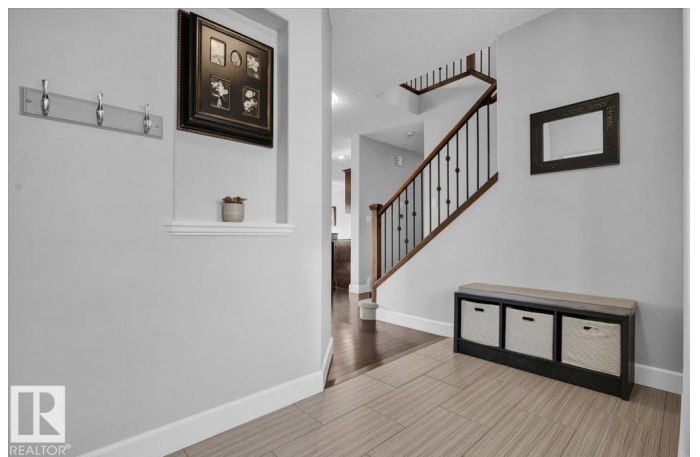
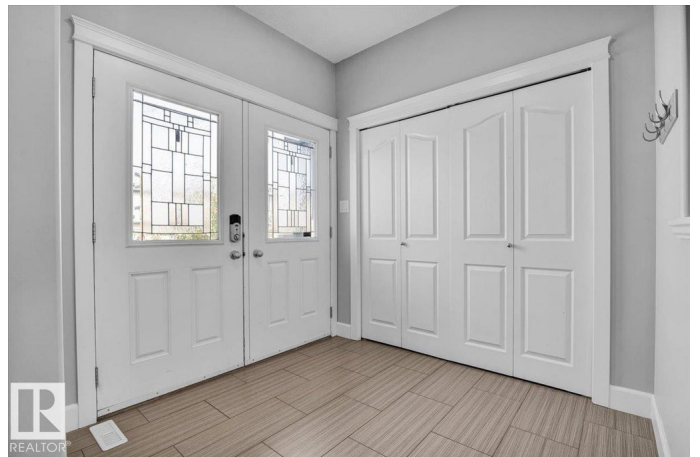
UPGRADED, ORIGINAL OWNER, BEDROCK-BUILT HOME. Upon entering, youâ€™ll love the natural light from large windows along the back & sides of the house. The main floor features an open-concept layout w/ hardwood floors & a gas fireplace. The kitchen includes quartz countertops, a tiled backsplash, a peninsula at eating-bar height, & a walkthrough pantry. The dining/living room overlooks your backyard w/ a two-tiered deck & pergola. Upstairs has a large bonus room w/ vaulted ceilings, a built-in speaker system & projector! The primary bedroom fits a king-sized bed & includes his & hers closets, plus a spa-like 5-piece ensuite. The upper level is completed w/ two more bedrooms, a 4-piece bathroom, & upstairs laundry. The basement is fully finished w/ 9 ft ceilings, a large rec room, two bedrooms & another full bathroom. Additional upgrades: newer stove, dishwasher & washer, tankless hot water, A/C, central vac, rough-in for basement laundry, heated/oversized double garage & MORE!

Built in 2011

### Essential Information

MLS® # E4457048

Price \$660,000



Bedrooms	5
Bathrooms	3.50
Full Baths	3
Half Baths	1
Square Footage	2,700
Acres	0.00
Year Built	2011
Type	Single Family
Sub-Type	Detached Single Family
Style	2 Storey
Status	Active

### Community Information

Address	17028 78 Street
Area	Edmonton
Subdivision	Schonsee
City	Edmonton
County	ALBERTA
Province	AB
Postal Code	T5Z 0E6

### Amenities

Amenities	Air Conditioner, Deck, No Animal Home, No Smoking Home, Vinyl Windows
Parking Spaces	4
Parking	Double Garage Attached, Heated, Over Sized

### Interior

Interior Features	ensuite bathroom
Appliances	Dishwasher-Built-In, Dryer, Garage Control, Hood Fan, Refrigerator, Stove-Electric, Vacuum Systems, Washer, Window Coverings
Heating	Forced Air-1, Natural Gas
Fireplace	Yes
Fireplaces	Tile Surround
Stories	3
Has Basement	Yes
Basement	Full, Finished

### Exterior

Exterior	Wood, Vinyl
Exterior Features	Landscaped, Playground Nearby, Public Transportation, Schools, Shopping Nearby
Roof	Asphalt Shingles
Construction	Wood, Vinyl
Foundation	Concrete Perimeter

### **School Information**

Elementary	Northmount/St.John B
Middle	Dickinsfield/J.J Bowlen
High	M.E.Lazerte/Arch. O'Leary

### **Additional Information**

Date Listed	September 10th, 2025
Days on Market	1
Zoning	Zone 28

DATA IS DEEMED RELIABLE BUT IS NOT GUARANTEED ACCURATE BY THE REALTORS® ASSOCIATION OF EDMONTON. COPYRIGHT 2025 BY THE REALTORS® ASSOCIATION OF EDMONTON. ALL RIGHTS RESERVED.Trademarks are owned or controlled by the Canadian Real Estate Association (CREA) and identify real estate professionals who are members of CREA (REALTOR®, REALTORS®) and/or the quality of services they provide (MLS®, Multiple Listing Service®)

Listing information last updated on September 11th, 2025 at 6:17am MDT